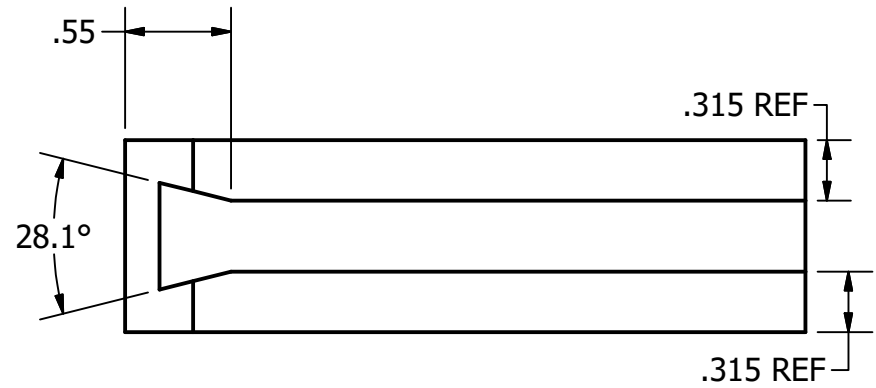
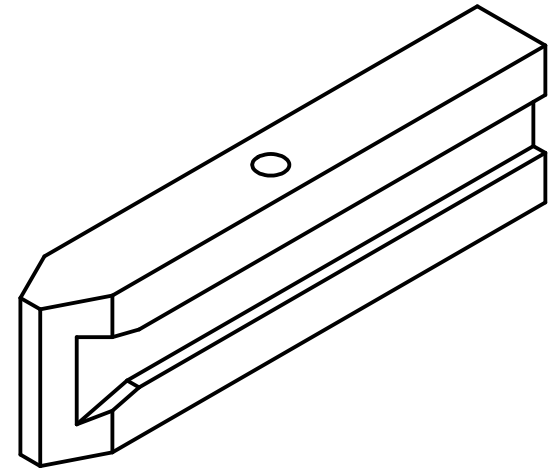
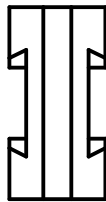
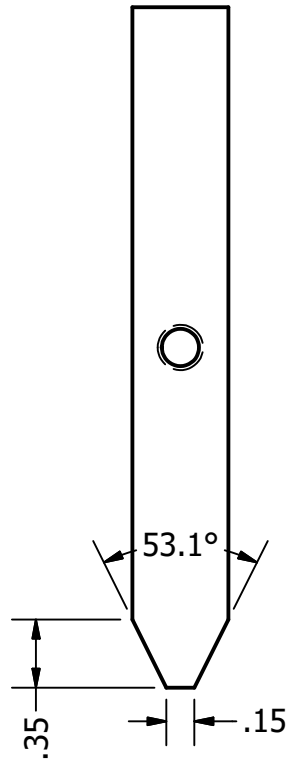


PARTS LIST QTY 1							
ITEM	TYPE	PART #	MATERIAL	DESCRIPTION	QTY	PULLED	SHRT
1	F	21.9390	UHMW BLACK	QUICK PANEL CONNECTOR	1		
2	S	21.1335		M6X25 SET SCREW WITH CONE POINT	1		

PACKAGING INSTRUCTIONS	2 PER BAG			
CUTS	TAPS	PANEL CUTS	MACHINING 8 MIN	ASSEMBLY .25 MIN
QUALITY CONTROL	SLIDE INTO TWO PROFILES & CHECK FIT			
PAPERWORK	DELETE PO & BUILD PART			
NOTES:				

PROJECT 21.9390 QUICK PANEL CONNECTOR				WWW.MINITECFRAMING.COM	
DRAWN BY ANDY MOLES				FARMINGTON, NY PH # 585 924-4690 FX # 585 924-4821 amoles@minitecframing.com	
DATE 6/24/2020		TITLE		DWG NO	
DRAWN FOR MINITEC FS		ADD TITLE		21.9390	
TOLERANCES UNLESS OTHERWISE NOTED X +/- .125" XX +/- .015" XXX +/- .010"		MATERIAL 21.9390 QUICK PANEL CONNECTOR			
FINISH		SHEET 1 OF 2			



PACKAGING INSTRUCTIONS				
CUTS	TAPS	PANEL CUTS	MACHINING	ASSEMBLY
QUALITY CONTROL				
PAPERWORK				
NOTES:				

PROJECT 21.9390 QUICK PANEL CONNECTOR				WWW.MINITECFRAMING.COM	
DRAWN BY ANDY MOLES				FARMINGTON, NY	
DATE 6/24/2020				PH # 585 924-4690	
DRAWN FOR MINITEC FS		TITLE ADD TITLE		DWG NO 21.9390	
TOLERANCES UNLESS OTHERWISE NOTED X +/- .125" XX +/- .015" XXX +/- .010"		MATERIAL UHMW BLACK		REV	
FINISH				SHEET 2 OF 2	